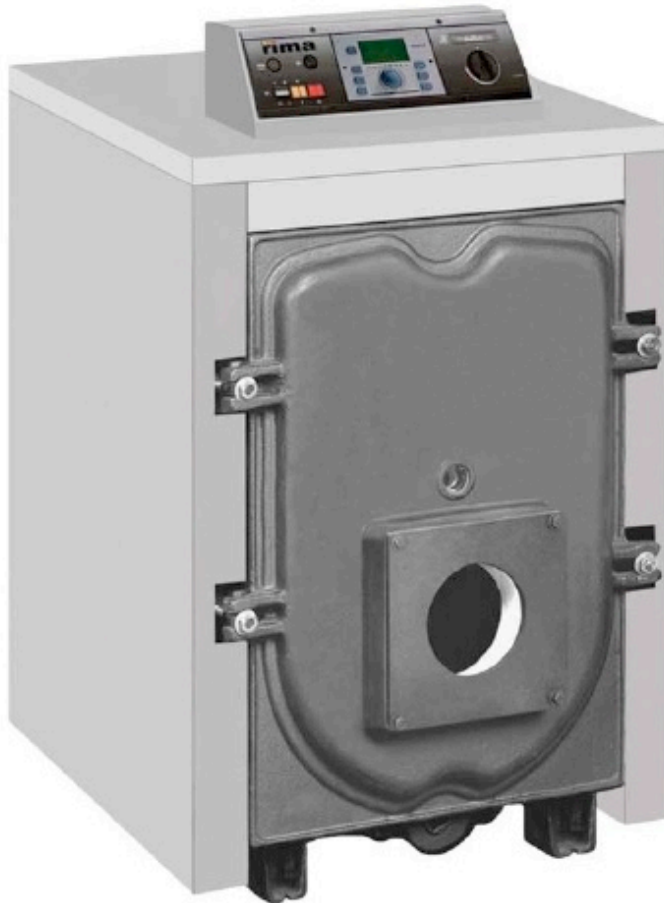


*RS series
76 - 145 kW*



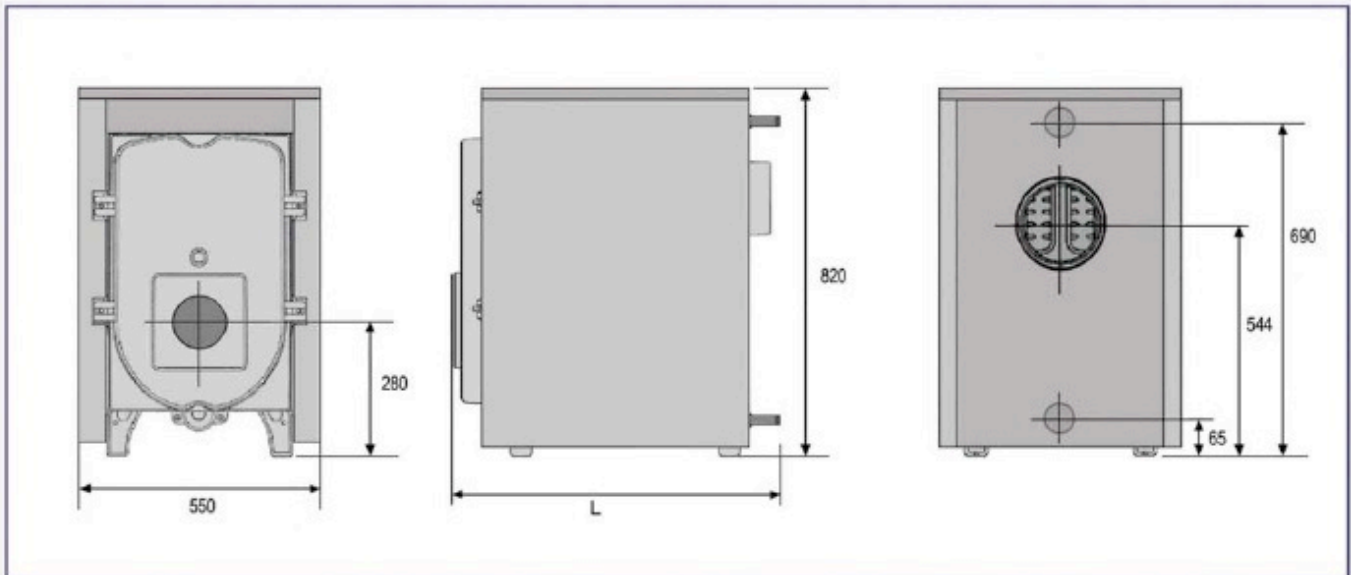
. three - pass design

. high efficiency

. cast iron sections



Dimensions :



RS series cast iron boilers heat transfer surface area is enlarged with the special wings in chimney ways and combustion area . With special designed flame delay turbulators, maximum heat is transferred to the water in the sections for gaining high efficiency.

Sections are produced with flexible casting technique , EN GJL 200 special cast iron alloy , which gives high resistance against corrosion and thermal expansions.

RS series boilers produce more energy with less fuel by its high efficiency and perfect heat isolation.

Burning gases move three times in the boiler with the help of three pass cast iron sections and this minimizes the chimney gas output temperature.

Installation, operation and controls can easily be done with the help of both side opening burner door.

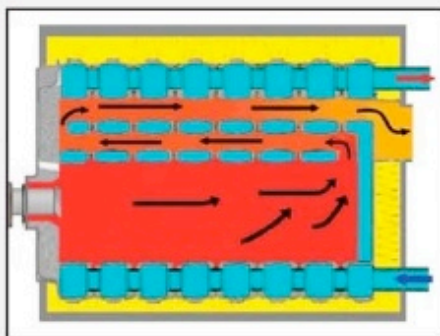
Boilers can easily be delivered and installed to the boiler room as it is delivered not assembled.



RS series automatic eco control panel

Technical Data :

Model		RS 05	RS 06	RS 07	RS 08	RS 09
Number Of Sections	Pcs.	5	6	7	8	9
Heat Output	kW	76	93	110	128	145
	kCal/h	65.000	80.000	95.000	110.000	125.000
Heat Input	kW	82	101	120	138	157
Operating Temperature	max °C	90				
Range Of Temperature Control	°C	30 - 90				
Gas Side Resistance	mbar	1,40 - 1,65	1,57 - 1,82	1,75- 2,05	2,00 - 2,30	2,25 - 2,55
Maximum Operating Pressure	Max. bar	6				
Boiler Water Content	Litres	55	65	75	85	95
	m³	0,055	0,065	0,075	0,085	0,095
Exit Flue Connection Diameter	mm	150		180		
Combustion Chamber Dimensions	Ø	336				
	L	550	670	790	910	1.030
Water Input - Output Connection	DN (")	G 2"				
Gas Volume Of the Boiler	dm³ (lt.)	64,10	78,36	92,62	106,88	121,14
	m³	0,064	0,078	0,093	0,107	0,121
Gas Volume Of the Combustion Chamber	dm³ (lt.)	45,94	56,16	66,38	76,60	86,82
	m³	0,046	0,056	0,066	0,077	0,087
Safety Temperature Limiter	°C	100				
Boiler Type		ON / OFF				
Fuel Type	Gas	Natural Gas (I2H)				
	Liquid F.	Liquid Fuel (Extra Light Heat Oil)				
Exit Flue Gas Temperature	Full Load °C	184 - 187	179 - 185	175 - 182	170 - 177	169 - 174
	Part Load °C	165 - 172	164 - 170	162 - 168	160 - 165	155 - 160
Exit Flue Gas Mass Flow (%13 CO2) % 60	Full Load kg / h	127	156	185	214	243
	Part Load kg / h	76	93	111	129	146
Chimney Effect	Pa	5				
Burner Type		Short Barrel				
Burner Flange Connection Dimension	mm	140				
Standby Loss	%	0,32	0,29	0,27	0,23	0,21
	kCal/h	2.246	2.506	2.770	2.732	2.835
Boiler Length (L)	mm	800	922	1.044	1.166	1.288
Dry Weight	Kg.	289	334	381	429	474
CE - Registration Number		CE - 1015BR0260				



Three draught design forces the flue gas to circulate inside the body of the boiler three times before the chimney exit, transferring all usefull energy to the water inside the sections . The optimized combustion chamber combined with perfect heat insulation provides maximum fuel efficiency.